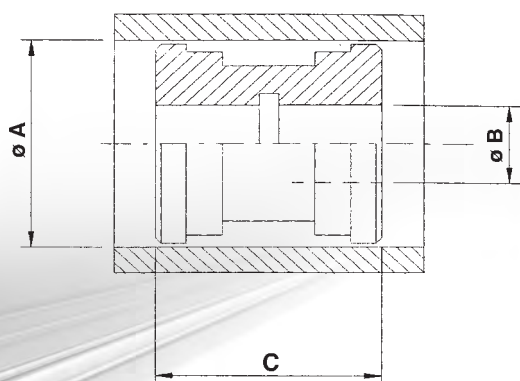


PIS

PISTONE PISTON

- MATERIALE
Acciaio AVP (9 SMn Pb 28)
- MATERIAL
Steel AVP (9 SMn Pb 28)



| SIGLA CODE | Q.TÀ MINIMA (E/O MULTIPLI) MINIMUM Q.TY (AND/OR MULTIPLES) | | | | PESO WEIGHT kg. |
|---------------|---|-----|----|----|---------------------------|
| PIS 03201530 | 12 pz/pcs | 32 | 15 | 30 | 0,09 |
| PIS 03501540 | 9 pz/pcs | 35 | 15 | 40 | 0,16 |
| PIS 04001540 | 9 pz/pcs | 40 | 15 | 40 | 0,23 |
| PIS 04501540 | 9 pz/pcs | 45 | 15 | 40 | 0,31 |
| PIS 05001540 | 9 pz/pcs | 50 | 15 | 40 | 0,37 |
| PIS 05002040 | 9 pz/pcs | 50 | 20 | 40 | 0,35 |
| PIS 05502040 | 8 pz/pcs | 55 | 20 | 40 | 0,42 |
| PIS 06002050 | 7 pz/pcs | 60 | 20 | 50 | 0,71 |
| PIS 06002445 | 8 pz/pcs | 60 | 24 | 45 | 0,56 |
| PIS 06002750 | 7 pz/pcs | 60 | 27 | 50 | 0,61 |
| PIS 06302050 | 7 pz/pcs | 63 | 20 | 50 | 0,70 |
| PIS 06302750 | 7 pz/pcs | 63 | 27 | 50 | 0,65 |
| PIS 06502050 | 7 pz/pcs | 65 | 20 | 50 | 0,88 |
| PIS 06502445 | 8 pz/pcs | 65 | 24 | 45 | 0,72 |
| PIS 06502550 | 7 pz/pcs | 65 | 25 | 50 | 0,70 |
| PIS 07002050 | 7 pz/pcs | 70 | 20 | 50 | 0,81 |
| PIS 07002445 | 8 pz/pcs | 70 | 24 | 45 | 0,76 |
| PIS 07002750 | 7 pz/pcs | 70 | 27 | 50 | 0,71 |
| PIS 07502445 | 8 pz/pcs | 75 | 24 | 45 | 0,93 |
| PIS 07502750 | 7 pz/pcs | 75 | 27 | 50 | 1,00 |
| PIS 08002445 | 8 pz/pcs | 80 | 24 | 45 | 1,11 |
| PIS 08002750 | 7 pz/pcs | 80 | 27 | 50 | 1,23 |
| PIS 08003050 | 7 pz/pcs | 80 | 30 | 50 | 1,25 |
| PIS 08502445 | 8 pz/pcs | 85 | 24 | 45 | 1,30 |
| PIS 08502750 | 7 pz/pcs | 85 | 27 | 50 | 1,43 |
| PIS 09002750 | 7 pz/pcs | 90 | 27 | 50 | 1,66 |
| PIS 09003350 | 7 pz/pcs | 90 | 33 | 50 | 1,55 |
| PIS 10002750 | 7 pz/pcs | 100 | 27 | 50 | 2,06 |
| PIS 10003350 | 7 pz/pcs | 100 | 33 | 50 | 1,95 |
| PIS 11003350 | / | 110 | 33 | 50 | 2,49 |
| PIS 11004050 | / | 110 | 40 | 50 | 2,33 |
| PIS 12004050 | / | 120 | 40 | 50 | 2,95 |
| PIS 12504050 | / | 125 | 40 | 50 | 3,24 |
| PIS 14004058 | / | 140 | 40 | 58 | 5,04 |
| PIS 15004058 | / | 150 | 40 | 58 | 5,67 |
| PIS 16005158 | / | 160 | 51 | 58 | 6,60 |