

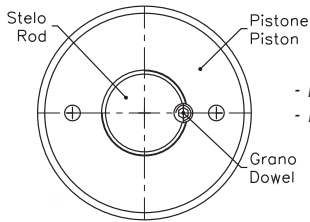
EPF

PISTONE FILETTATO THREADED PISTON

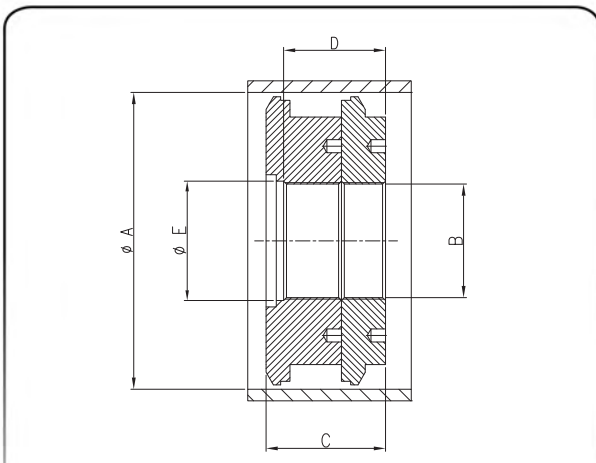
- MATERIALE **Acciaio AVP (9 SMn Pb 28)**
- MATERIAL **Steel AVP (9 SMn Pb 28)**



SIGLA CODE	Q.TÀ MINIMA (E/O MULTIPLI) MINIMUM Q.TY (AND/OR MULTIPLES)	Ø A	B	C	D	Ø E	PESO WEIGHT kg.
EPF 060024045	8 pz/pcs	60	M 24x2	45	21	3,5	0,59
EPF 063024045	8 pz/pcs	63	M 24x2	45	21	3,5	0,67
EPF 070024050	7 pz/pcs	70	M 24x2	50	21	3,5	0,91
EPF 070027050	7 pz/pcs	70	M 27x2	50	24	3,5	0,89
EPF 080033050	7 pz/pcs	80	M 33x2	50	30	3,5	1,13
EPF 090033050	7 pz/pcs	90	M 33x2	50	30	3,5	1,56
EPF 100033050	7 pz/pcs	100	M 33x2	50	30	3,5	1,97



- È consigliabile bloccare il pistone filettato con un grano M6 tra pistone e stelo, utilizzando un'adesivo frenafiletto tipo Loctite (vedi figura)
- It is suggested to lock the threaded piston by means of a security dowel M6 between the piston and the rod, using a threadlocking adhesive, like Loctite's one. (see picture)



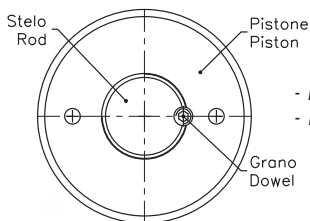
EPF

PISTONE FILETTATO THREADED PISTON

- MATERIALE **Acciaio AVP (9 SMn Pb 28)**
- MATERIAL **Steel AVP (9 SMn Pb 28)**



SIGLA CODE	Ø A	Ø B	C	D	Ø E	PESO WEIGHT kg.
EPF 18008082	180	M 80x2	82	70	82	9,75
EPF 20008082	200	M 80x2	82	70	82	13
EPF 25008082	250	M 98x2	82	70	101	21,60



- È consigliabile bloccare il pistone filettato con un grano M8 tra pistone e stelo, utilizzando un'adesivo frenafiletto tipo Loctite (vedi figura)
- It is suggested to lock the threaded piston by means of a security dowel M8 between the piston and the rod, using a threadlocking adhesive, like Loctite's one. (see picture)